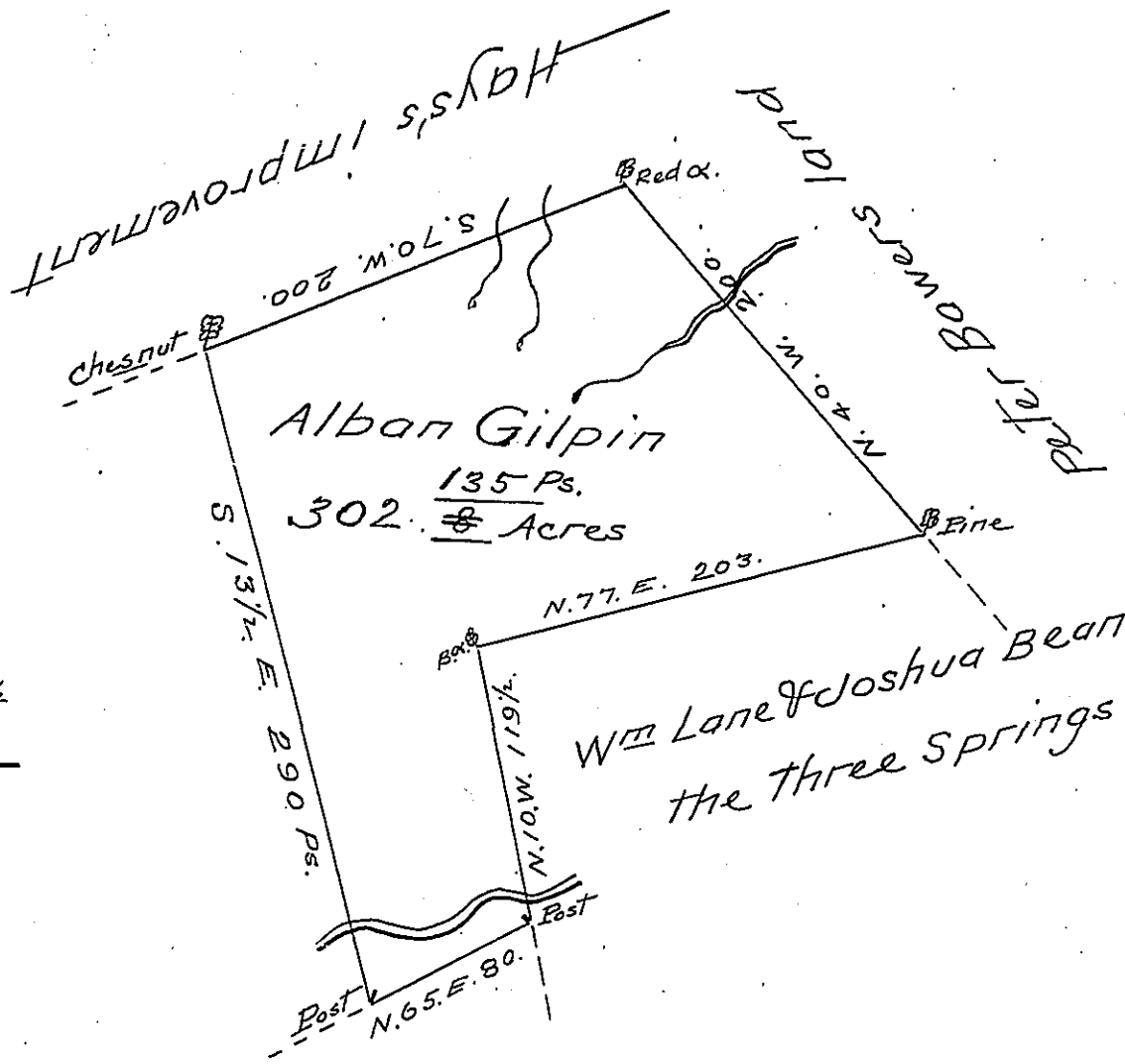


Courses & Dist.  
 N. 40. W. 200.  
 S. 70. W. 200.  
 S. 13 1/2 E. 290.  
 N. 65. E. 80  
 N. 10. W. 119 1/2  
 N. 77. E. 203



Draught of a tract of land situate in Greenwood Township Cumberland County Containing Three hundred & two Acres & <sup>135 Ps.</sup> ~~eight tenths~~ of the usual allowance of six per Cent for roads &c surveyed for Alban Gilpin May the 5<sup>th</sup> 1785 in pursuance of a Warrant from the Honorable the Vice President of the Supreme Executive Council dated at Philad<sup>a</sup> January the 5<sup>th</sup> 1785

To John Lukens Esq<sup>r</sup>                      Jas<sup>s</sup> Harris D.S.  
 Surv<sup>r</sup> Gen<sup>l</sup> —

IN TESTIMONY that the above is a copy of the original remaining on file in the Department of Internal Affairs of Pennsylvania, made conformably to an Act of Assembly approved the 16th day of February, 1833, I have hereunto set my Hand and caused the Seal of said Department to be affixed at Harrisburg, this Twenty fifth day of October 1904.

*Roac P. Brown*  
 Secretary of Internal Affairs.